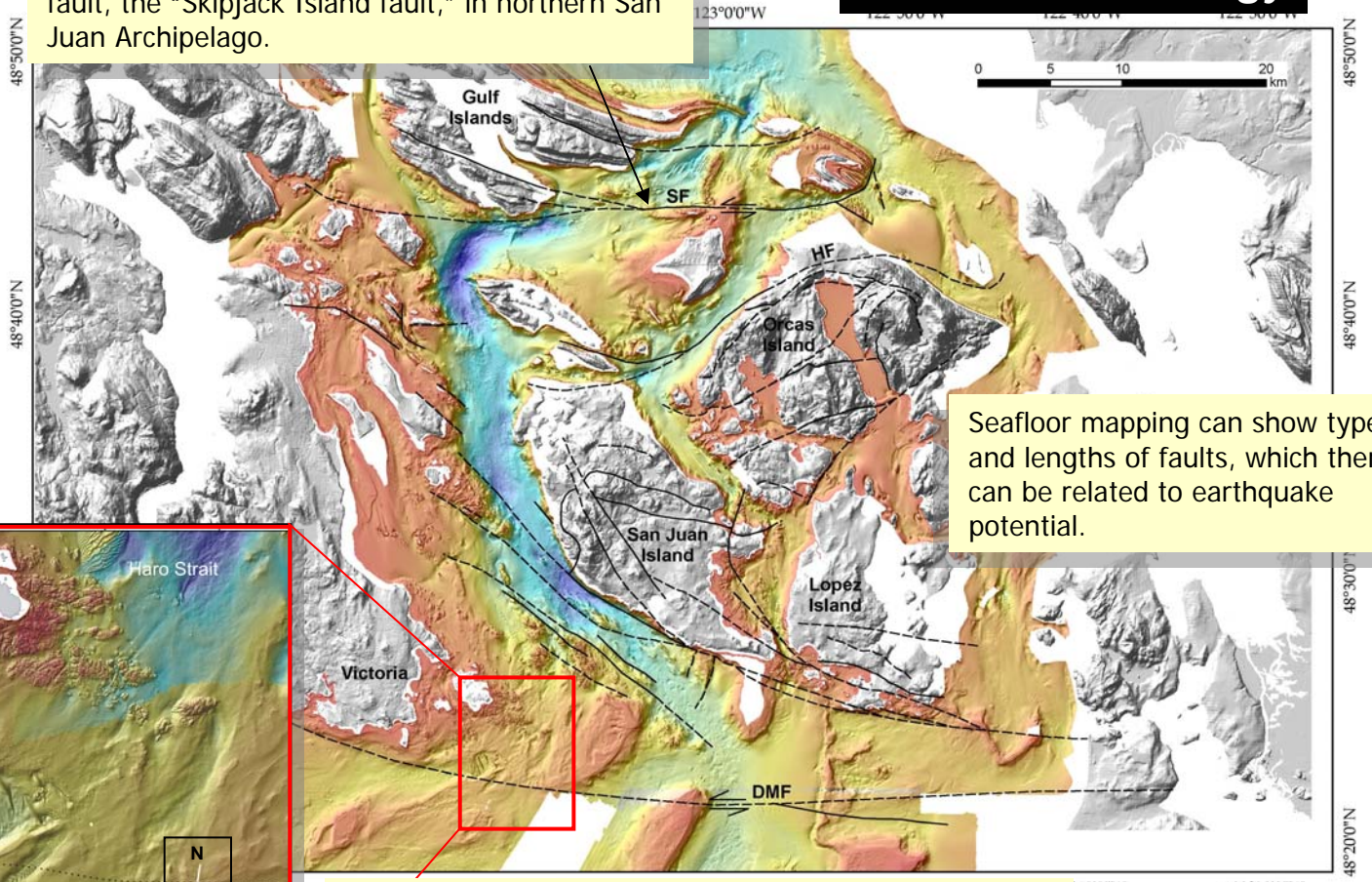
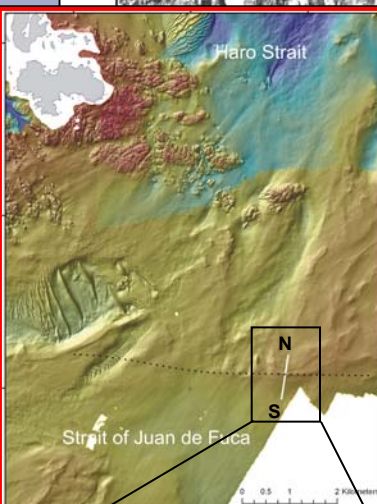


Seafloor Mapping & Structural Geology

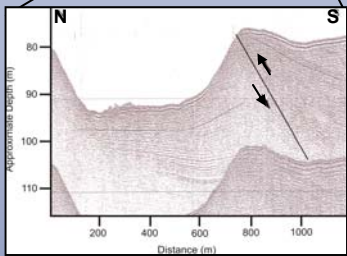
Seafloor mapping revealed a new transcurrent fault, the "Skipjack Island fault," in northern San Juan Archipelago.



Seafloor mapping can show types and lengths of faults, which then can be related to earthquake potential.



Sub-bottom seismic-reflection profile across Devil's Mtn. fault showing nearly 20 m seafloor displacement.



Geology & Habitat

Dynamic bedforms, such as small sediment wave fields, may be a foraging habitat containing sand lance (*Ammodytes hexapterus*).

Sediment wave fields also represent a valuable resource for sand and gravel (aggregate mining).

